

Bridge Inspection Report

00519

US 64/sec15/L7.76

over

LANGUILLE RIVER



Inspection Date:

Inspected By:

Inspection Type(s):



Inspector:

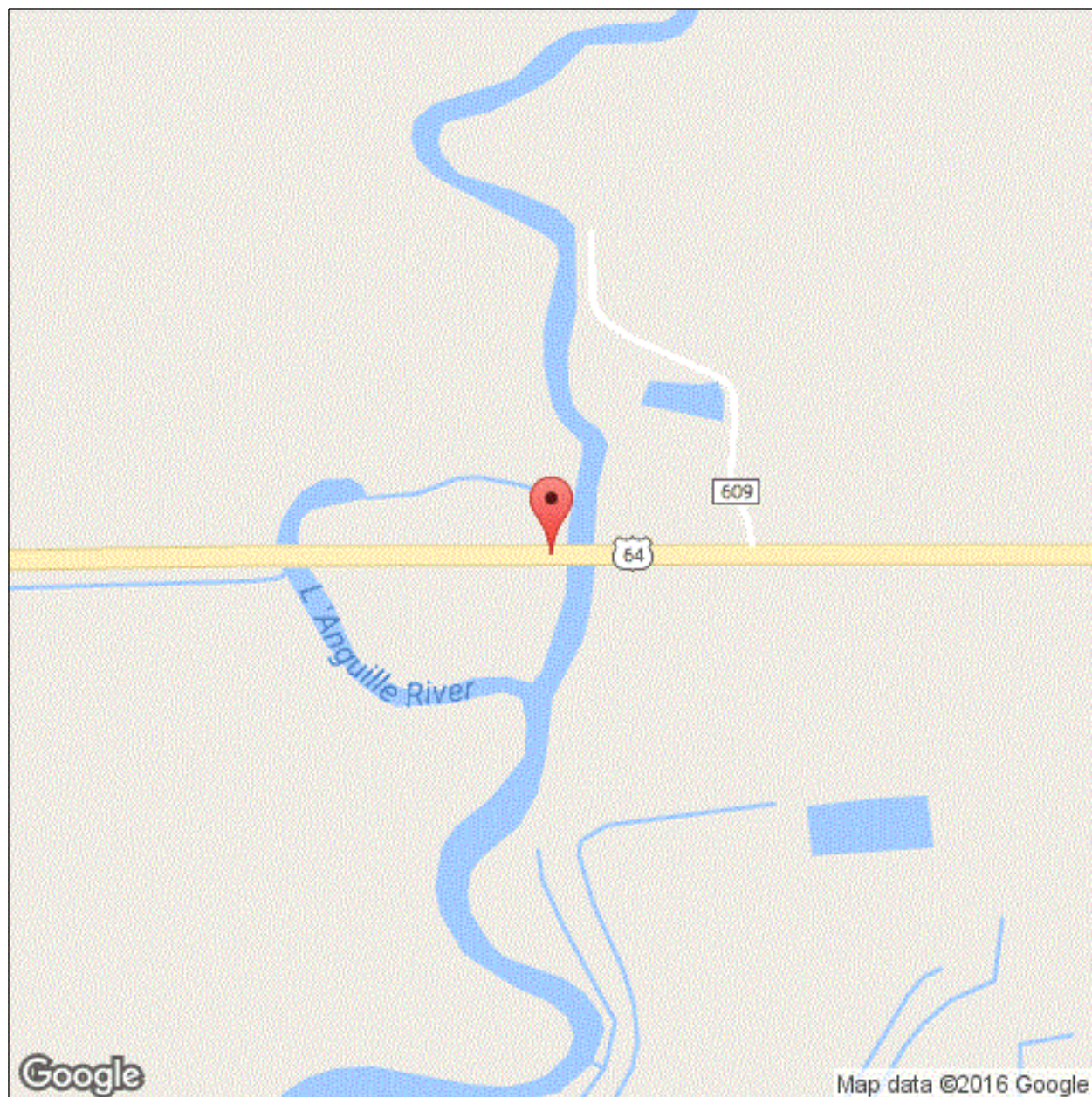
Structure Number: 00519

Inspection Date:

Facility Carried: US 64/sec15/L7.76

Bridge Inspection Report

Location Map



Latitude: 35.251694

Longitude: -90.903412

Inspector:

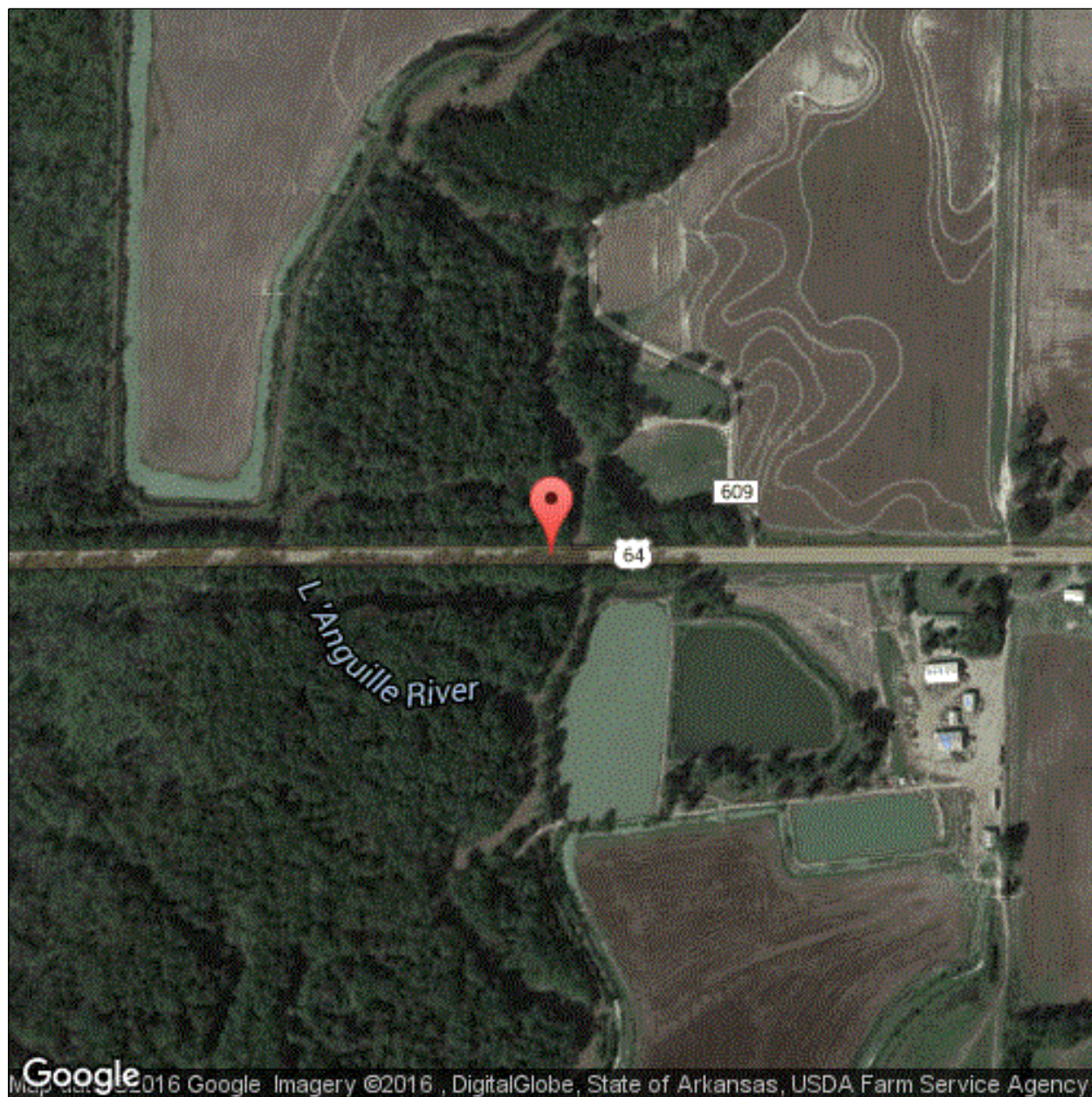
Structure Number: 00519

Inspection Date:

Facility Carried: US 64/sec15/L7.76

Bridge Inspection Report

Location Map



Latitude: 35.251694

Longitude: -90.903412

Inspector:

Structure Number: 00519

Inspection Date:

Facility Carried: US 64/sec15/L7.76

Bridge Inspection Report

National Bridge Inventory

IDENTIFICATION		INSPECTIONS	
(1) STATE CODE	056 - Arkansas	(90) INSPECTION DATE	06/22/2016
(8) STRUCTURE NUMBER	00519	(91) DESIGNATED INSPECTION FREQUENCY	24
(5) INV. ROUTE (ON/UNDER)	1 2 1 64 0	(92) CRITICAL FEATURE INSPECTION	(93) CFI DATE
(2) HIGHWAY AGENCY	01 (3) COUNTY CODE 037	A. FRACTURE CRITICAL DETAIL	N
(4) PLACE CODE	74540	B. UNDERWATER INSPECTION	N
(6) FEATURES INTERSECTED	LANGUILLE RIVER	C. OTHER SPECIAL	N
(7) FACILITY CARRIED	US 64/sec15/L7.76		
(9) LOCATION	6.2 MI W OF JCT SH 1 NO.		
(11) MILEPOINT 7.76	(12) BASE HIGHWAY NETWORK 1		
(13A) LRS INVENTORY ROUTE	0000064150 (13B) SUBROUTE NUMBER 00		
(16) LATITUDE	35.251694 (17) LONGITUDE -90.903412		
(98A) BORDER BRIDGE CODE			
PERCENT RESPONSIBILITY	(99) BORDER BRIDGE STRUCT		
STRUCTURE TYPE AND MATERIAL		CONDITION	
(43) STRUCTURE TYPE, MAIN		(58) DECK	8
A) KIND OF MATERIAL/DESIGN: 3 - Steel		(59) SUPERSTRUCTURE	7 (60) SUBSTRUCTURE 7
B) TYPE OF DESIGN/CONSTR: 02 - Stringer/Multi-beam or Girder		(61) CHANNEL & CHANNEL PROTECTION	8 (62) CULVERT N
(44) STRUCTURE TYPE, APPROACH SPANS			
A) KIND OF MATERIAL/DESIGN: 1 - Concrete			
B) TYPE OF DESIGN/CONSTR: 01 - Slab			
(45) NUMBER OF SPANS IN MAIN	1 (46) NUMBER OF APPROACH	4	
(107) DECK STRUCTURE TYPE	1 (108A) WEARING SURFACE	6	
(108B) DECK MEMBRANE	0 (108C) DECK PROTECTION	0	
AGE OF SERVICE		LOAD RATING AND POSTING	
(27) YEAR BUILT	1963 (106) YEAR RECONSTRUCTED	0000	
(42) TYPE OF SERVICE	ON 1 UNDER 5		
(28) LANES	ON 02 UNDER 00		
(29) AVERAGE DAILY TRAFFIC	4000 (19) BYPASS DETOUR LENGTH	5	
(30) YEAR OF AVERAGE DAILY TRAFFIC	2014		
(109) AVERAGE DAILY TRUCK TRAFFIC	1		
GEOMETRIC DATA		APPRAISAL	
(48) LENGTH OF MAX SPAN (ft.)	75 (49) STRUCTURE LENGTH (ft.)	175	
(50) CURB/SIDEWALK WIDTHS (ft.)	LEFT 1.3 RIGHT 1.3		
(51) BRDG RDWY WIDTH CURB-TO-CURB (ft.)	27.9		
(52) DECK WIDTH, OUT-TO-OUT (ft.)	33.5		
(32) APPROACH ROADWAY WIDTH (ft.)	40.0		
(33) BRIDGE MEDIAN	0 (34) SKEW (DEG.)	0	
(35) STRUCTURE FLARED	0 (10) INV RTE, MIN VERT CLEAR (ft.)	99.99	
(47) TOTAL HORIZONTAL CLEARANCE (ft.)	30.8		
(53) VERTICAL CLEARANCE OVER BRIDGE ROADWAY (ft.)	99.99		
(54) VERTICAL UNDER CLEARANCE (ft.)	N 0		
(55) LATERAL UNDER CLEARANCE RIGHT (ft.)	N 99.9		
(56) MIN LATERAL UNDER CLEARANCE (ft.)	0		
PROPOSED IMPROVEMENTS		STATUS	
(75A) TYPE OF WORK PROPOSED	(75B) WORK DONE BY		
(76) LENGTH OF STRUCTURE IMPROVEMENT (ft.)	0		
(94) BRIDGE IMPROVEMENT COST (\$)	0		
(95) ROADWAY IMPROVEMENT COST (\$)	0		
(96) TOTAL PROJECT COST	0		
(97) YEAR OF IMPROVEMENT COST ESTIMATE			
(114) FUTURE ADT	4549 (115) YEAR OF FUTURE ADT	2028	
		CLASSIFICATION	
		(112) NBIS BRIDGE LENGTH	Y
		(104) HIGHWAY SYSTEM OF THE INVENTORY ROUTE	0
		(26) FUNCTIONAL CLASSIFICATION OF INVENTORY ROUTE	06
		(100) STRAHNET HIGHWAY DESIGNATION	0
		(101) PARALLEL STRUCTURE DESIGNATION	N
		(102) DIRECTION OF TRAFFIC	2
		(103) TEMP STRUCTURE	
		(105) FEDERAL LANDS HIGHWAYS	0
		(110) DESIGNATED NATIONAL NETWORK	0
		(20) TOLL	3
		(21) MAINTENANCE RESPONSIBILITY	01
		(22) OWNER	01
		(37) HISTORICAL	5
		NAVIGATION DATA	
		(38) NAVIGATION CONTROL	0
		(111) PIER OR ABUTMENT PROTECTION	1
		(39) NAV VERT CLEARANCE (ft.)	0
		(116) MIN NAVIGATION VERT CLEARANCE, VERT LIFT BRIDGE (ft.)	0
		(40) NAV HORIZONTAL CLEARANCE (ft.)	0

Inspector:

Structure Number: 00519

Inspection Date:

Facility Carried: US 64/sec15/L7.76

Bridge Inspection Report

Element Inspection

Rollup

	Environment	Total Quantity	Units	Condition State 1	Condition State 2	Condition State 3	Condition State 4
12 - Reinforced Concrete Deck	1- Ben.	2513	sq. ft.	2313	200	0	0
1120 - Efflorescence/Rust Staining		200		0	200	0	0
510 - Wearing Surfaces		2100	sq. ft.	2044	56	0	0
3220 - Crack (Wearing Surface)		56		0	56	0	0
38 - Reinforced Concrete Slab	1- Ben.	3350	sq. ft.	3250	0	100	0
1120 - Efflorescence/Rust Staining		100		0	0	100	0
510 - Wearing Surfaces		2800	sq. ft.	2716	84	0	0
3220 - Crack (Wearing Surface)		84		0	84	0	0
107 - Steel Open Girder/Beam	1- Ben.	375	ft.	0	375	0	0
1000 - Corrosion		375		0	375	0	0
515 - Steel Protective Coating		3308	sq. ft.	0	3308	0	0
3440 - Effectiveness (Steel Protective Coatings)		3308		0	3308	0	0
215 - Reinforced Concrete Abutment	1- Ben.	80	ft.	80	0	0	0
227 - Reinforced Concrete Pile	1- Ben.	26	each	23	0	3	0
1090 - Exposed Rebar		3		0	0	3	0
234 - Reinforced Concrete Pier Cap	1- Ben.	130	ft.	126	4	0	0
1090 - Exposed Rebar		4		0	4	0	0
301 - Pourable Joint Seal	1- Ben.	134	ft.	134	0	0	0
305 - Assembly Joint without Seal	1- Ben.	67	ft.	67	0	0	0
515 - Steel Protective Coating		201	sq. ft.	0	0	0	201
3440 - Effectiveness (Steel Protective Coatings)		201		0	0	0	201
311 - Movable Bearing	1- Ben.	5	each	0	5	0	0
1000 - Corrosion		5		0	5	0	0
515 - Steel Protective Coating		10	sq. ft.	0	0	10	0
3440 - Effectiveness (Steel Protective Coatings)		10		0	0	10	0
313 - Fixed Bearing	1- Ben.	5	each	0	0	5	0
1000 - Corrosion		5		0	0	5	0
515 - Steel Protective Coating		10	sq. ft.	0	0	10	0
3440 - Effectiveness (Steel Protective Coatings)		10		0	0	10	0
330 - Metal Bridge Railing	1- Ben.	350	ft.	0	350	0	0
1000 - Corrosion		200		0	200	0	0
515 - Steel Protective Coating		1050	sq. ft.	0	1050	0	0
3440 - Effectiveness (Steel Protective Coatings)		600		0	600	0	0

Inspector:

Structure Number: 00519

Inspection Date:

Facility Carried: US 64/sec15/L7.76

Bridge Inspection Report

Element Inspection

Spans 1,2,4 and 5

	Environment	Total Quantity	Units	Condition State 1	Condition State 2	Condition State 3	Condition State 4
38 - Reinforced Concrete Slab	1- Ben.	3350	sq. ft.	3250	0	100	0
	Slab spans 1,2,3, 4 & 5 have insignificant longitudinal cracks with some light rust stains.						
1120 - Efflorescence/Rust Staining		100				100	
510 - Wearing Surfaces		2800	sq. ft.	2716	84	0	0
3220 - Crack (Wearing Surface)		84			84		
215 - Reinforced Concrete Abutment	1- Ben.	80	ft.	80			
227 - Reinforced Concrete Pile	1- Ben.	10	each	10			
234 - Reinforced Concrete Pier Cap	1- Ben.	65	ft.	61	4	0	0
	Bent #5 ahead face rt. side 2' spall w / exp. rebar & mod. sect. loss. BENT #5 BOTTOM OF CAP HAS 3 6" PIECES OF REBAR EXPOSED BY PILE #4.						
1090 - Exposed Rebar		4			4		
301 - Pourable Joint Seal	1- Ben.	134	ft.	134			
330 - Metal Bridge Railing	1- Ben.	200	ft.	0	200	0	0
1000 - Corrosion		200			200		
515 - Steel Protective Coating		600	sq. ft.	0	600	0	0
3440 - Effectiveness (Steel Protective Coatings)		600			600		

Inspector:

Structure Number: 00519

Inspection Date:

Facility Carried: US 64/sec15/L7.76

Bridge Inspection Report

Element Inspection

Span 3

	Environment	Total Quantity	Units	Condition State 1	Condition State 2	Condition State 3	Condition State 4
12 - Reinforced Concrete Deck	1- Ben.	2513	sq. ft.	2313	200	0	0
Slab spans 1,2,3, 4 & 5 have insignificant longitudinal cracks with some light rust stains.							
1120 - Efflorescence/Rust Staining		200			200		
510 - Wearing Surfaces		2100	sq. ft.	2044	56	0	0
3220 - Crack (Wearing Surface)		56			56		
107 - Steel Open Girder/Beam	1- Ben.	375	ft.	0	375	0	0
Steel girders have freckle rust with light pitting forming.							
1000 - Corrosion		375			375		
515 - Steel Protective Coating		3308	sq. ft.	0	3308	0	0
3440 - Effectiveness (Steel Protective Coatings)		3308			3308		
227 - Reinforced Concrete Pile	1- Ben.	16	each	13	0	3	0
Pile 3 Bt. 4 has 6 in wide x 3 ft. long shelled off area with exposed rebar Sp. 3 side , up to 1/8 in. section loss to rebar.							
1090 - Exposed Rebar		3				3	
234 - Reinforced Concrete Pier Cap	1- Ben.	65	ft.	65			
305 - Assembly Joint without Seal	1- Ben.	67	ft.	67			
joint steel has no paint with no section loss at this time. Overlay make limited viewing of assembly joint.							
515 - Steel Protective Coating		201	sq. ft.	0	0	0	201
3440 - Effectiveness (Steel Protective Coatings)		201					201
311 - Movable Bearing	1- Ben.	5	each	0	5	0	0
MOVEABLE BEARINGS HAVE CORROSION WITH LAMINATIONS WITH NO SECTION LOSS.							
1000 - Corrosion		5			5		
515 - Steel Protective Coating		10	sq. ft.	0	0	10	0
3440 - Effectiveness (Steel Protective Coatings)		10				10	
313 - Fixed Bearing	1- Ben.	5	each	0	0	5	0
FIXED BEARINGS HAVE CORROSION WITH LAMINATIONS WITH UP TO 5% SECTION LOSS.							
1000 - Corrosion		5				5	
515 - Steel Protective Coating		10	sq. ft.	0	0	10	0
3440 - Effectiveness (Steel Protective Coatings)		10				10	
330 - Metal Bridge Railing	1- Ben.	150	ft.	0	150		
515 - Steel Protective Coating		450	sq. ft.	0	450		

Agency Inventory

Structural

BRIDGE GROUP

WEARING SURFACE THICKNESS IN

WEATHERING STEEL No

PIN / HANGER No

STAY IN PLACE FORMS No

STEEL TONS Tons(41) STRUCTURE
OPEN/POSTED/CLOSED A**Location**ROAD / ROUTE NAME SECTION ZONE **Seismic**

SEISMIC

SEISMIC YEAR / ZONE **Notification**SCHOOL DISTRICT EMAIL OWNER EMAIL

LATE REASON

Load Po**Calculated**

CODE 4 VEHICLE (22 tons)

CODE 9 VEHICLE (31 tons)

CODE 5 VEHICLE (40 tons)

Posted

Bridge Beginning

CODE 4 TonsCODE 9 TonsCODE 5 Tons**Stip**

APHN

STIP

JOB NUMBER

PROG. JOB NUMBER

OLD BRIDGE NUMBER

NEW BRIDGE NUMBER

BRIDGE CONDITION INDEX

Notes

Vegetation is growing under and beside bridge.
Abutment slopes have several animal holes.

Inspector:

Structure Number: 00519

Inspection Date:

Facility Carried: US 64/sec15/L7.76

Bridge Inspection Report

Maintenance Needs

Date Reported: 06/22/2016

Priority: D - Routine

Work Code: N/A

Deficiency Description:

Vegetation is growing under and beside bridge.

Work Description:

Date Repairs Completed:

Maintenance Comments:

Inspector:

Structure Number: 00519

Inspection Date:

Facility Carried: US 64/sec15/L7.76

Bridge Inspection Report

Maintenance Needs

Date Reported: 06/22/2016

Priority: D - Routine

Work Code: N/A

Deficiency Description:

Abutment slopes have several animal holes.

Work Description:

Date Repairs Completed:

Maintenance Comments:

Stage: Open



PHOTO 1 Description Typical animal hole.

Inspector:

Structure Number: 00519

Inspection Date:

Facility Carried: US 64/sec15/L7.76

Bridge Inspection Report

Maintenance Needs

Date Reported: 6/12/2012 12:00:00 AM

Priority: D - Routine

Work Code: N/A

Deficiency Description:

SPAN #3 STEEL GIRDERS HAVE FRECKLED RUST FORMING WITH SOME LIGHT PITTING.

Work Description:

Date Repairs Completed:

Maintenance Comments:

Stage: Monitor



PHOTO 1 Description Typical girder.

Inspector:

Structure Number: 00519

Inspection Date:

Facility Carried: US 64/sec15/L7.76

Bridge Inspection Report

Maintenance Needs

Date Reported: 6/12/2012 12:00:00 AM

Priority: C - Important

Work Code: N/A

Deficiency Description:

RIGHT END OF BENT #4 CAP ON SPAN #4 SIDE HAS A 2'X2' X3" DEEP SHELLLED OFF AREA WITH EXPOSED REBAR.

BOTTOM OF BENT #4 CAP AROUND PILE #4 HAS 2 SMALL (8"X8") SHELLLED OFF AREAS WITH MINOR SECTION LOSS TO REBAR.

Work Description:

Date Repairs Completed:

Maintenance Comments:

Stage: Monitor



PHOTO 1 Description Bent 4 cap.